



suitable for  
42-50"

## PRODUCT DETAILS

# RISE

RISE is a flexible learning solution designed to give the user the ability to rearrange classrooms on the fly and create different learning environments to suit their teaching style on the day.

The unit can be used as a traditional display while the screen is raised and can also be partnered with flexible desks for collaborative group work. The screen can be retracted when it is not needed, providing clear line of sight for students.

### Features

- Electronic retractable screen
- 2x 1U top loading internal rack space
- Front & rear panel access
- Nesting design
- Soft close lid for smooth open and close action
- Piezo anti collision system



**Ideal for flexible learning**  
Screen can be raised for group work or concealed and moved out the way for more traditional non-ICT based work.



**2x 1U rack space**  
Allows rack mounted equipment to be integrated behind the screen and in the lower section of the unit.



**Facilitates seamless AV/IT integration**  
Complete internal cable management creates an 'all-in-one' solution.



Screen can be raised and partnered with tables for IT based group work



Retract the screen when not in use, providing clear line of sight for students.

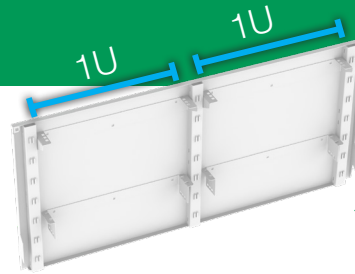


Can be stored away when not in use so that the space can be used for other activities

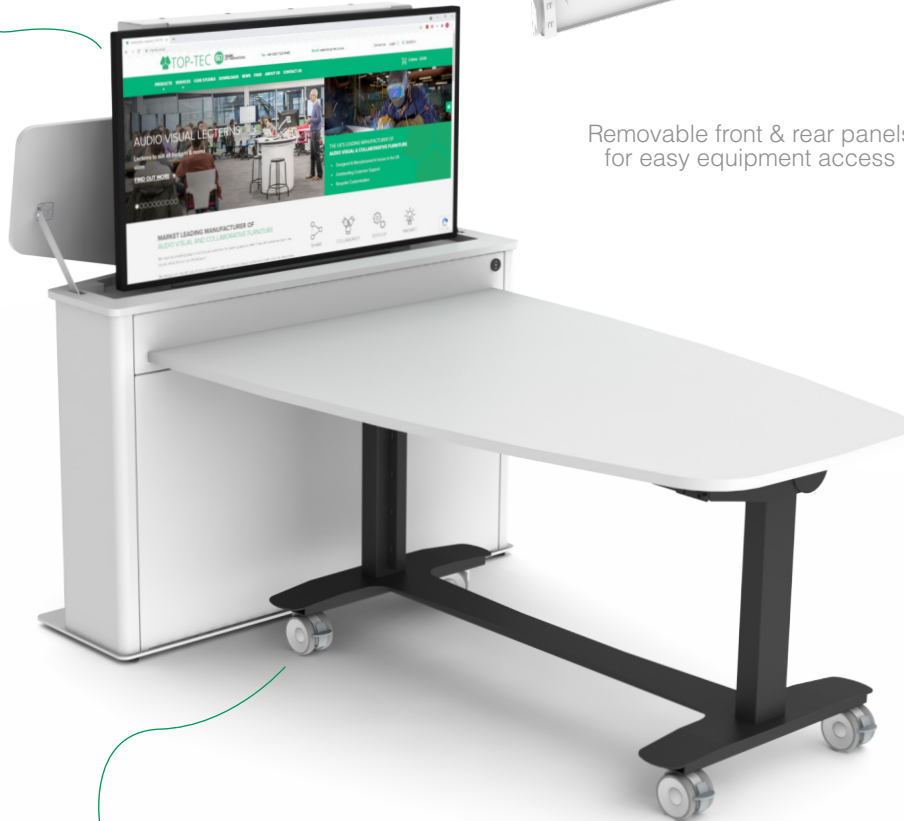
For further information about our solutions and to discuss your individual requirements please contact a member of the TOP-TEC team.

TOP-TEC is a brand of Dalen Limited  
Valepits Road, Garretts Green, Birmingham, B33 0TD  
T: +44 (0)121 783 3838 E: sales@top-tec.co.uk  
W: top-tec.co.uk

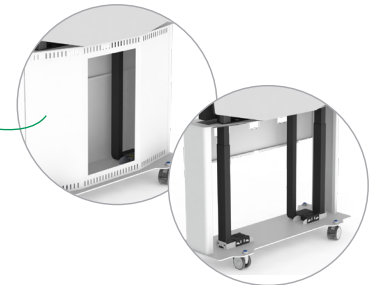
● Suitable for 42" - 50" screens



2x 1U top loading rack space. Can be removed from unit to populate rack.



Removable front & rear panels for easy equipment access



Can be stored away when not in use

● Simple screen deployment  
- High quality castors  
- Screen can be easily stored / nested away when not in use

● Flexible learning solution  
- Combines with our Arc tables for the perfect flexible learning package



## Technical Information

Model	Code	Screen info.	MAX screen size	Product dimensions	Product weight
Rise	REXX-SR-SM	42" - 50" up to 400x400 VESA	1175mm(W) x 100mm(D) x 650mm(H)	1360mm(W) x 520mm(D) x 1003mm(H) Screen raised: 1620mm(H)	80kg

### Included

- Choice of standard paint & worktop finishes
- High quality castors
- Front & rear removable panels
- Optional handles
- On-board 4-gang power

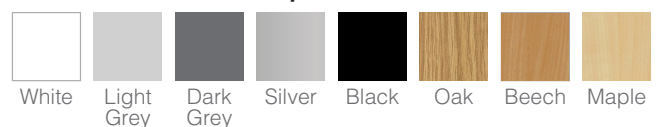
### Additional Cost

- Non-standard paint & worktop finishes
- Bespoke connectivity (front input plate)
- Vinyl or printed branding
- Arc tables

### Standard Paint Finishes



### Standard Worktop Finishes



For further information about our solutions and to discuss your individual requirements please contact a member of the TOP-TEC team.

TOP-TEC is a brand of Dalen Limited  
Valepits Road, Garretts Green, Birmingham, B33 0TD  
T: +44 (0)121 783 3838 E: sales@top-tec.co.uk  
W: top-tec.co.uk